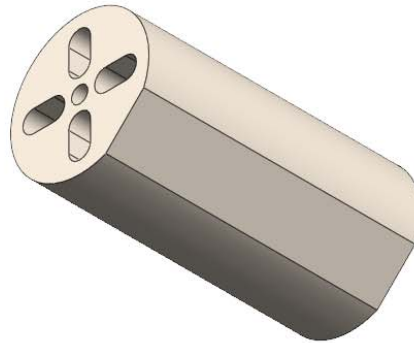
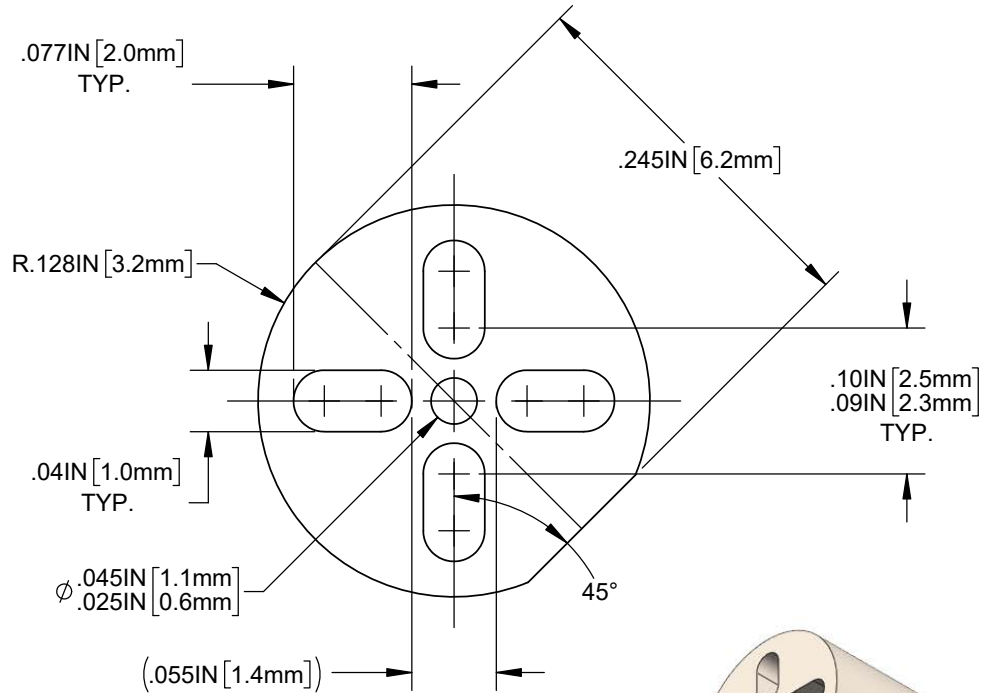
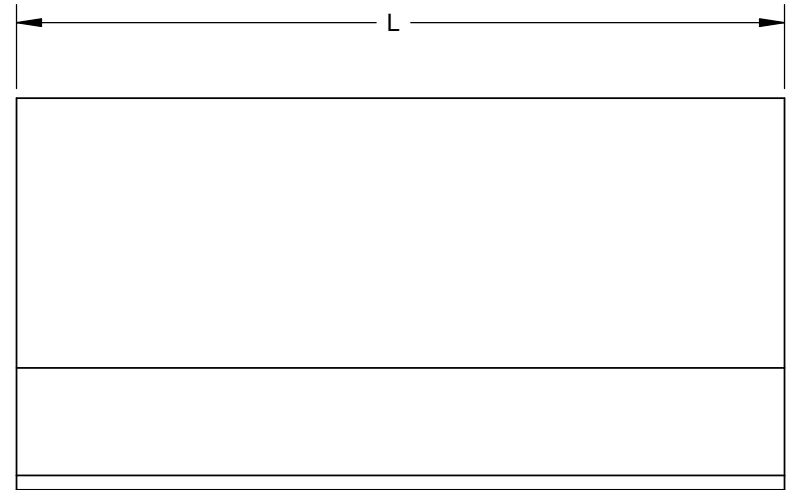


NOTES:


1. MATERIAL: PVC ALLOY, 94V-0, NATURAL
2. TOLERANCE "L" DIMENSIONS:  
.030 ~ .500 inch +/- .005 (1.0 ~ 12.7mm +/- 0.1mm)



REVISIONS			
REV.	DESCRIPTION	DATE	APPROVED
A	ENGINEERING RELEASE	1/03/2022	ATV
B	Removed Longer Lengths	6/29/2022	ATV
C	ECO-1142, RELAX DIM TOLERANCES	7/19/2022	ATV
D	ECO-XXXX, RE-DESIGN FOR MFG CONV.	9/14/2022	ATV
E	E REVISED SLOT AND CENTER HOLE DIM	9/20/2022	ATV
F	REVISED COLOR TO NATURAL	9/23/2022	RP
F1	CHG DWG TITLE; CORR. DATE	12/1/2022	A.V.



**CUSTOMER USE DRAWING**

STANDARD TOLERANCE (UNLESS OTHERWISE SPECIFIED)		 4 THOMAS, IRVINE, CA. 92618 TEL: (949) 951-8808 FAX: (949) 951-3974	
DECIMALS	ANGULAR		
.X ± .1	X° ± 1°	TITLE: EXTRUDED LED MOUNT SELF-RETAINING WITH POLARITY IDENTIFIER	
.XX ± .01			
.XXX ± .005		DRAWING NO: ELM 3-XXXX REVISION: F	
DESIGNED: A. VALDEZ	DATE: 04/07/2022	SHEET SIZE A	CAGE CODE: 32559
REVISD: M. PAGDONSOLAN	DATE: 12/1/2022		
CHECKED: A. VALDEZ	DATE: 12/1/2022	SCALE: 8:1	SHEET # 1 OF 1
CAD GENERATED DOCUMENT, DO NOT MEASURE DRAWING			